

Hawaii Youth Symphony  
2018-2019 CONCERT ORCHESTRA CELLO Audition Music  
(Page 1 of 2)

**Part I: Scales** (Total Time for Scales: 1 min. max)

- Judges will select **TWO** of the following **2-Octave** Scales:
  - C-Major, G-Major, D-Major, A-Major, F-Major, Bb-Major, and Eb-Major
  - Scales are written out below and should be played as seen here. Fingerings are at your discretion.
  - Scale can be performed without slurs, 2 notes per bow, or 4 notes per bow only.
  - Student must perform the scales at the tempo of **QUARTER NOTE = 60**. Please note that the **scale is written in EIGHTH NOTES**. So, **TWO NOTES PER BEAT** of the metronome. A metronome will be provided.

C-Major



G-Major



D-Major



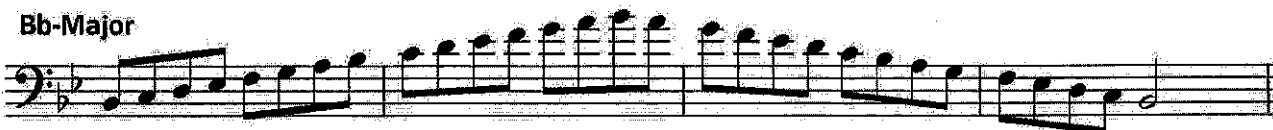
A-Major



F-Major



Bb-Major



Eb-Major



Hawaii Youth Symphony  
2018-2019 CONCERT ORCHESTRA CELLO Audition Music  
(Page 2 of 2)

**Part II: Orchestral Excerpts**

- Students should perform the excerpts within the given tempo range. It is NOT expected that the student will be able to perform the excerpts at the upper end of the tempo range.
- A metronome is NOT required, but may be used if the student wishes to perform with one. A metronome will be available, but if the student wants to bring their own metronome to use, that is perfectly fine.
- To ensure that we hear each excerpt, students may be asked to stop the excerpt they are on and go on to the next one so that the judges can hear all of the excerpts. This is a normal procedure, and students should not be worried if they are asked to stop and go on to the next excerpt.

**Excerpt #1: Symphony No. 40 by Mozart**

- Total Time for Excerpt #1: 45 sec. max.
- 2/2 time signature, Key of G-Minor, Half Note = 84—120

Musical score for Excerpt #1: Symphony No. 40 by Mozart, Cello part. The score is written in bass clef, 2/2 time signature, and G minor. It consists of four staves of music. The first staff starts at measure 114 and ends with a fermata. The second staff starts at measure 120 and ends with a fermata. The third staff starts at measure 126 and ends with a fermata. The fourth staff starts at measure 131 and ends with a fermata. There are several 'V' markings above the notes, indicating vibrato. A 'C' in a box is at the end of the fourth staff.

**Excerpt #2: Melodic & Progressive Exercises, Opus 31, Book 1 by S. Lee**

- Total Time for Excerpt #2: 2 min.. max.
- 4/4 time signature, Key of C-Major, Quarter Note = 72-100

Musical score for Excerpt #2: Melodic & Progressive Exercises, Opus 31, Book 1 by S. Lee, Cello part. The score is written in bass clef, 4/4 time signature, and C major. It starts with the tempo marking 'Andante' and the dynamic marking 'mf'. The score consists of five staves of music. The first staff has a fermata. The second staff has a fermata. The third staff has a fermata. The fourth staff has a fermata. The fifth staff has a fermata. There are many fingering numbers (1, 2, 3, 4) written above the notes.