

# Hawaii Youth Symphony: YOUTH SYMPHONY II

## 2018-2019 VIOLA AUDITION

### Part I: Major Scales: (Total Time for Scales: 30 seconds max)

- Judges will select **ONE MAJOR** scale for you to play from the list below.
- Scale should be performed as notated.
- Students may choose their own bowings and fingerings.
- **There is no preferred or recommended tempo however all of the scales within Part 1 must be performed in UNDER 30 seconds or judges will stop the scale and move on to the next section of the audition.**

#### C Major

Musical notation for the C Major scale, consisting of two staves. The first staff is in bass clef with a common time signature (C) and contains the first half of the scale: C2, D2, E2, F2, G2, A2, B2, C3. The second staff is in treble clef and contains the second half of the scale: C3, D3, E3, F3, G3, A3, B3, C4. The notation includes fingerings and bowings for each note.

#### D $\flat$ Major

Musical notation for the D $\flat$  Major scale, consisting of two staves. The first staff is in bass clef with a key signature of two flats (B $\flat$ , E $\flat$ ) and a common time signature (C) and contains the first half of the scale: D $\flat$ 2, E $\flat$ 2, F2, G2, A2, B $\flat$ 2, C3. The second staff is in treble clef and contains the second half of the scale: D $\flat$ 3, E $\flat$ 3, F3, G3, A3, B $\flat$ 3, C4. The notation includes fingerings and bowings for each note.

#### E $\flat$ Major

Musical notation for the E $\flat$  Major scale, consisting of two staves. The first staff is in bass clef with a key signature of three flats (B $\flat$ , E $\flat$ , A $\flat$ ) and a common time signature (C) and contains the first half of the scale: E $\flat$ 2, F2, G $\flat$ 2, A $\flat$ 2, B $\flat$ 2, C3. The second staff is in treble clef and contains the second half of the scale: E $\flat$ 3, F3, G $\flat$ 3, A $\flat$ 3, B $\flat$ 3, C4. The notation includes fingerings and bowings for each note.

#### F Major

Musical notation for the F Major scale, consisting of two staves. The first staff is in bass clef with a key signature of one flat (B $\flat$ ) and a common time signature (C) and contains the first half of the scale: F2, G2, A2, B $\flat$ 2, C3. The second staff is in treble clef and contains the second half of the scale: F3, G3, A3, B $\flat$ 3, C4. The notation includes fingerings and bowings for each note.

# Hawaii Youth Symphony: YOUTH SYMPHONY II

## 2018-2019 VIOLA AUDITION Page 2

### Part II: Minor Scales: (Total Time for Scales: 30 seconds max)

- Judges will select ONE MINOR scale for you to play from the following list.
- Scale should be performed as notated.
- Students may choose their own bowings and fingerings.
- **There is no preferred or recommended tempo however all of the scales within Part 1 must be performed in UNDER 30 seconds or judges will stop the scale and move on to the next section of the audition.**

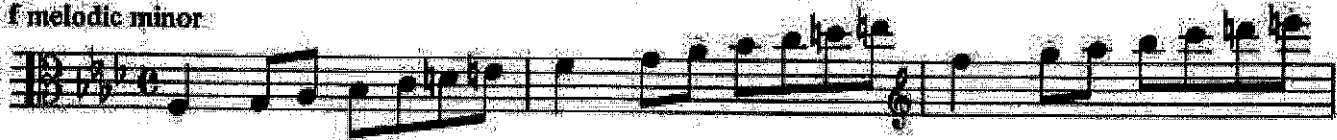
#### c melodic minor



#### e melodic minor



#### f melodic minor



# Hawaii Youth Symphony: YOUTH SYMPHONY II

## 2018-2019 VIOLA AUDITION Page 3

### Part II: Orchestral Excerpts

- Students should perform the music to the best of their ability at the tempo in which they can best play the music.
- A metronome is NOT required for the orchestral excerpts and students should NOT bring a metronome to the audition but they are encouraged to practice with a metronome.
- Students may use any bowing and fingering they want even if something else is printed in the music.
- To ensure that we hear each excerpt, students may be asked to stop the excerpt they are on and go on to the next excerpt. This is normal and students should not worry if they are asked to stop.

**Excerpt #1 and 2:** F. Schubert's Rosamunde Overture (Total time for Excerpt #1 and 2: 1 minute).  
Suggested Tempo: Half Note=140

The image shows a page of musical notation for the Viola part of Schubert's Rosamunde Overture. The score is divided into two main sections, G and H, with a key signature change to K (D major) at the end. The measures are numbered from 275 to 490. The notation includes various dynamics such as *ff*, *fz*, *pp*, and *simile*. There are also performance markings like accents and slurs. Two boxes labeled "Start Here" indicate the beginning of the excerpts. The first "Start Here" box is at measure 285, and the second is at measure 410. The score ends with a *simile* marking at measure 490.

# Hawaii Youth Symphony: YOUTH SYMPHONY II

## 2018-2019 VIOLA AUDITION Page 4

**Excerpt #3:** O Mio Babbino Caro Melody by G. Puccini (Total time for Excerpt #3: 1 Minute Max.)

- Please feel free to interpret this piece as musically as you can.
- Place dynamics where you see fit.
- You may change the slurs to fit your needs.

Start Here

8

12